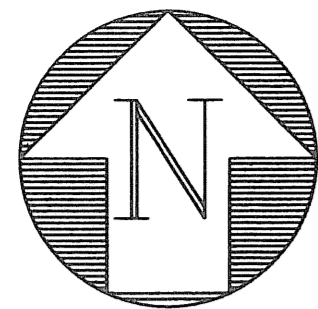


0062



GRAPHIC SCALE  
0 40' 80'  
SCALE: 1"=40'

# SONOMA BAY

Being a replat of Parcel "A" and Lake Parcel L-1 of the plat of Sierra-Sonoma Bay as recorded in Plat Book 102, Pages 149 through 152 and lying in the Northeast Quarter of Section 30, Township 42 South, Range 43 East, City of Riviera Beach, Palm Beach County, Florida.

SHEET 2 OF 3  
JUNE 2005

SILVER BEACH ROAD (P.B. 21, PG. 3)  
NORTH LINE N.E. 1/4 SECTION 30-42-43  
S87°18'50"E  
SILVER BEACH ROAD (P.B. 21, PG. 3)

19 20  
30 29

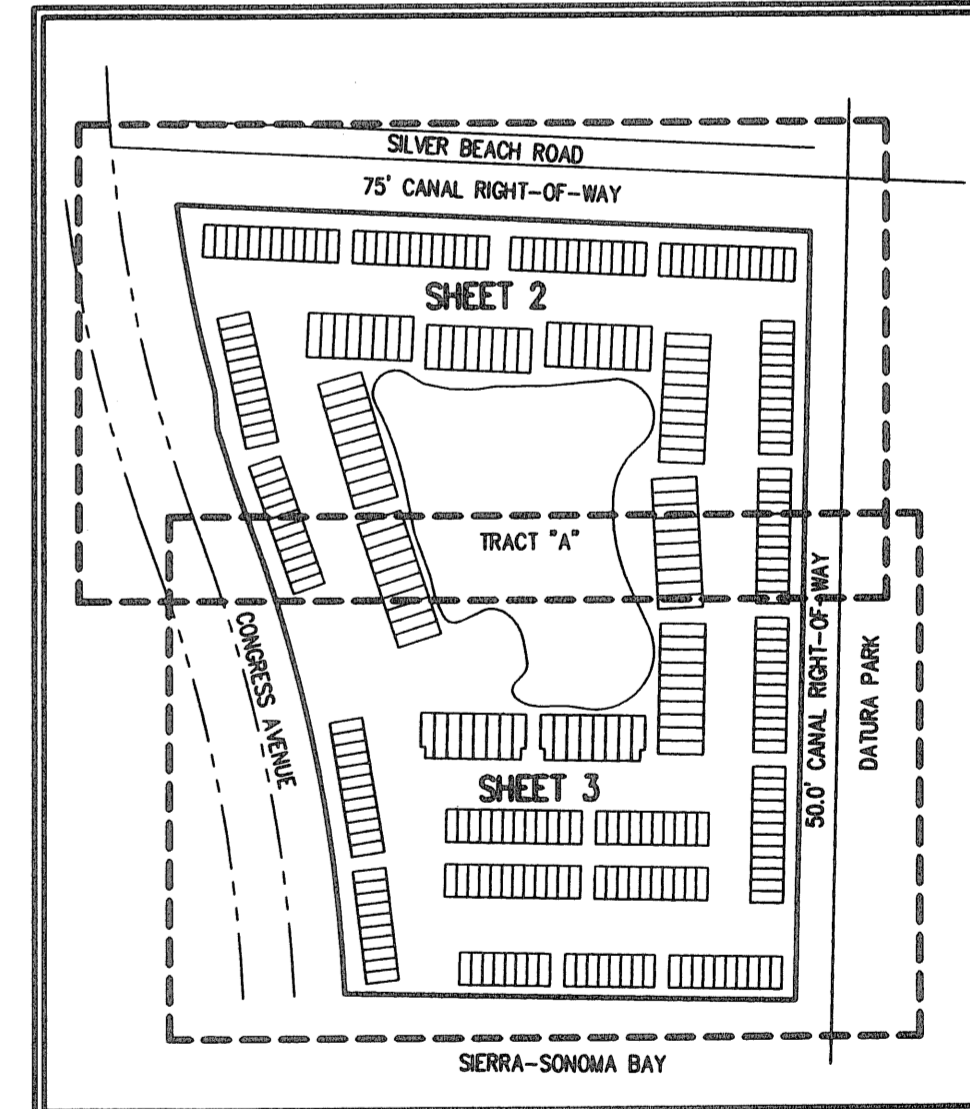
75' CANAL RIGHT-OF-WAY (O.R.B. 800 PG. 312)  
S 87°18'50" E  
75' CANAL RIGHT-OF-WAY (O.R.B. 800 PG. 312)

EMBANKMENT EASEMENT (ORB 10644, PG.1073)

CONGRESS AVENUE (O.R.B. 10644, PG. 963) (UNPLATTED)

### LEGEND

- U.E. = UTILITY EASEMENT
- D.E. = DRAINAGE EASEMENT
- = PERMANENT REFERENCE MONUMENT #2633 SET.
- = DENOTES PERMANENT CONTROL POINT #2633.
- CH = CHORD
- R = RADIUS
- L = ARC LENGTH
- Δ = CENTRAL ANGLE
- (N.R.) = NON-RADIAL
- O.R.B. = OFFICIAL RECORD BOOK
- P.G. = PAGE
- L.M.E. = LAKE MAINTENANCE EASEMENT
- W.L.E. = WATER LINE EASEMENT
- S.L.E. = SEWER LINE EASEMENT
- ⊕ = CENTERLINE

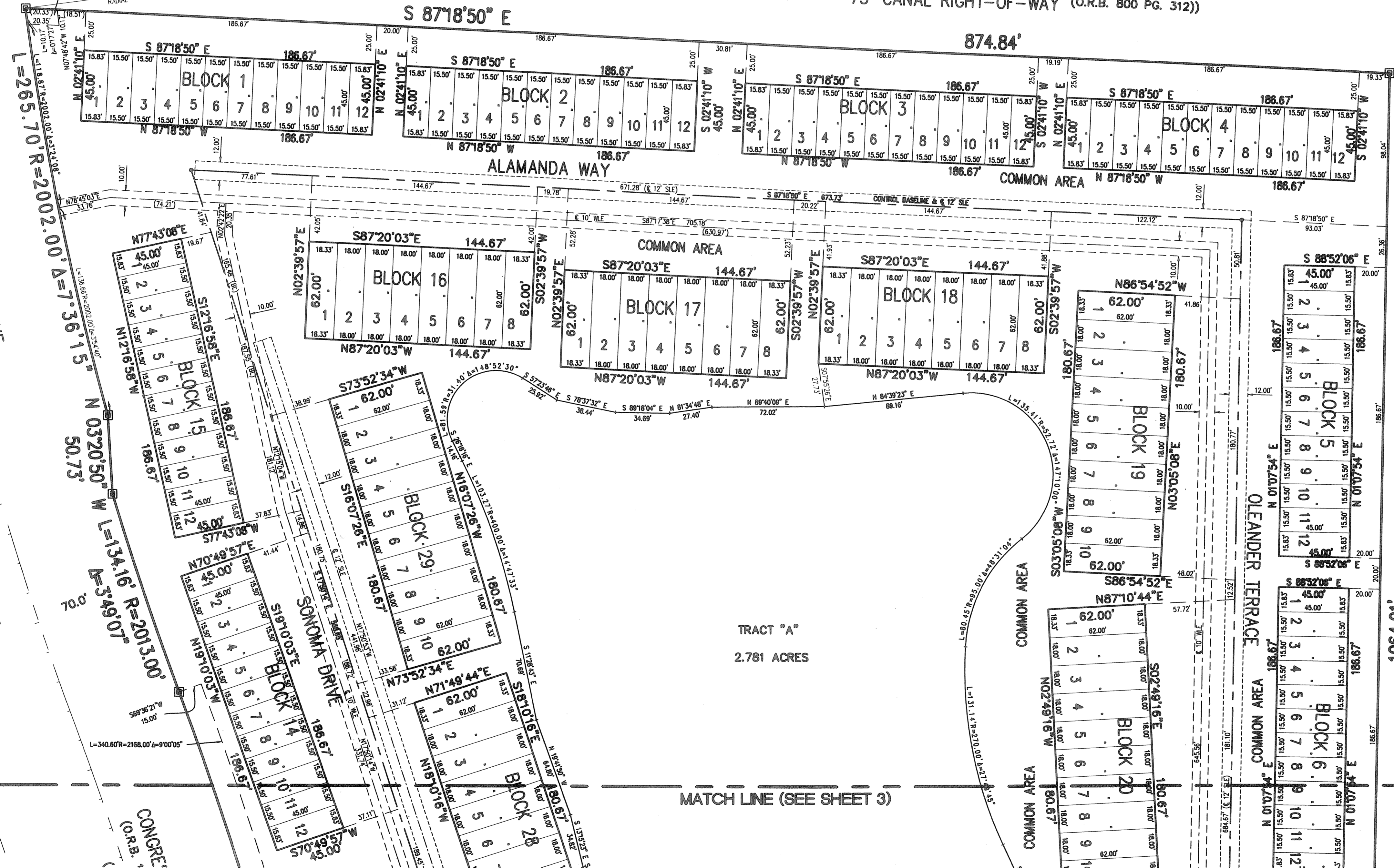


DATURA PARK P.B. 27, PGS. 165 & 166

50.0' CANAL RIGHT-OF-WAY (ORB. 800, PAGE 312)

1679901

### SONOMA BAY



MATCH LINE (SEE SHEET 3)

TRACT "A"  
2.781 ACRES

THIS INSTRUMENT PREPARED BY ANDRE RAYMAN, P.S.M. LS#4636 STATE OF FLORIDA.  
SFRN, INC., ENGINEERS, SURVEYORS & MAPPERS  
1201 BELVEDERE ROAD, WEST PALM BEACH, FLORIDA 33405.  
CERTIFICATE OF AUTHORIZATION NO. LB0008803

1201 BELVEDERE ROAD, WEST PALM BEACH, FLORIDA 33405  
PH (561)855-1151 • FAX (561)832-9300 • WWW.SFRNINC.COM

DATE	03/23/2005
SCALE	1" = 50'
CAD FILE	4016.03.dwg
SDSK PROJECT	4016
DRAWN	SFRN STAFF
CHECKED	G. RAYMAN

SHEET	2/3
JOB NO.	04016.03

K:\Land Projects\B2\4016.03.dwg 9/2/2005 8:46:53 AM EST